



## Early Detection and Integrated Management of Tuberculosis in Europe

PJ-03-2015

Early diagnosis of tuberculosis

### D2.1 Project Leaflet

#### WP 2 – Dissemination

<b>Due date of deliverable</b>	Month 3 – 2 August 2016
<b>Actual submission date</b>	07/12/2016
<b>Start date of project</b>	3 May 2016
<b>Duration</b>	36 months
<b>Lead beneficiary</b>	UNIBS
<b>Last editor</b>	Pauline Chetail
<b>Contributors</b>	UNIBS, UCL
<b>Dissemination level</b>	<i>Public</i>



*This project E-DETECT TB has received funding from the European Union's Health Programme (2014-2020) under grant agreement N°709624.*

## History of the changes

Version	Date	Released by	Comments
1.0	20-07-2016	Susanna Capone	First draft circulated to UCL
1.1	20-07-2016	Pauline Chetail	Modifications and Layout, sent back to UNIBS
1.2	20-07-2016	Susanna Capone	Compilation of UCL comments, circulated to partners
1.4	17-08-2016	Pauline Chetail	Compilation of partners comments
1.5	17-11-2016	Pauline Chetail	Finalisation of the deliverable with final leaflet attached

## Table of contents

General Information .....	2
Role of Partners and Timing .....	3
Contents and rationale .....	3
Leaflet.....	4

## General Information

---

A project leaflet has been produced as the identity card of E-DETECT TB project. It will briefly introduce its background, objectives, work-packages and outputs.

The aim of the leaflet is to give a direct, catching, snapshot of E-DETECT TB. It will also highlight the Consortium members and the existence of the E-DETECT TB dedicated website.

The leaflet target recipients will be research and academic institutions; and national and international organisations.

It will be disseminated during major events, e.g. international congresses /workshops on TB, some specific national conferences or other significant events.

The distribution target area will be jointly agreed and based on consensus among all the E-DETECT TB members.

English is its first language but a translated version of the leaflet will be available in other languages according to specific needs (Italian and Romanian will be primarily considered)

2,800 copies will be printed and distributed to each partner for further dissemination: 200 copies/member except for UNIBS and KNCV, who will receive 500 copies, respectively as leaders of WP2 and WP4.

The leaflet will be available electronically on the project [website](#) and other relevant and related websites (ECDC/ERS/WHO).

An easy-to-print version of the leaflet has been developed for partners. This version will differ only on graphic definition and printing characteristics, while content and structure will not change. Additional budget has been set-aside in case the consortium needs extra copies at a later stage throughout the project life cycle.

## Role of Partners and Timing

---

The leaflet content and structure was designed by University College of London (UCL) in collaboration with the University of Brescia (UNIBS) between July and November 2016 (M2-M7). Its graphic was developed by a visual artist, specialized on creation and communication.

E-DETECT TB members have been involved throughout the elaboration of the leaflet and its definitive version is the result of a global consultation which has taken into account suggestions and experience of all the partners.

By the end of November 2016 (M7), the leaflet soft-copy will be available on E-DETECT TB website, and shared with all the country members as well.

Hardcopies will be printed in London and sent to all E-DETECT TB members by the end of 2016 (M8).

## Contents and rationale

---

E-DETECT TB leaflet has been designed in order to respect the following criteria:

- to deliver a clear message
- to catch immediately the reader's attention
- to give a sense of trust and professionalism
- to provide the project with a serious but also appealing image

The text has been developed to respond to a direct question and it uses short sentences. It is organised in brief paragraphs and focuses on key-words. The text is usually accompanied by self-explanatory images.

Migrants and vulnerable populations are the protagonists of the scene.

Common background is represented by the theme of tuberculosis and the multidisciplinary approach to face it, where each member finds his own place.

The dedicated list of work-packages emphasizes the actual activities and organisation of the project.

The leaflet finally references the website and provides contact details so as to link towards sources for further information.

## Leaflet

The full size version of the leaflet is added as an Annex to this Deliverable; and an overview is presented below.





# Early detection and integrated management of **tuberculosis** in Europe



 **DETECTTB**  
early detection & treatment of tuberculosis in europe

## What is E-DETECT TB about?

**E-DETECT TB** – early detection and integrated management of tuberculosis in Europe is a project co-funded by The European Commission's 3rd Health Programme.

**Our aim** is to contribute to the elimination of TB in the European Union by applying evidence-based interventions to ensure early diagnosis, improve integrated care and supporting community and prison outreach activities in low and high-incidence countries.

**E-DETECT TB** is a practical programme of translational research targeting homeless people, prisoners, high-risk drug users and those with multi-drug resistant tuberculosis in Romania and Bulgaria, migrants arriving on Italian coasts and asylum seekers in Italy and improved control of tuberculosis in migrants in other European countries.

**UCL** is the coordinating centre for our network of partners from six member states (Bulgaria, Italy, the Netherlands, Romania, Sweden and the United Kingdom (UK)). We work jointly to evaluate the implementation of evidence-based interventions, taking best practice approaches from countries where national strategic plans have been developed. In collaboration with the European Commission (DG SANTE), the European Centre for Disease Prevention and Control (ECDC), WHO EURO and civil society partners, we will work towards the adaptation of guidelines and policies to strengthen TB control across the European Union.

*"E-DETECT TB brings together a unique group of TB experts, world leading universities, non-governmental organisations, charities and national TB programmes to contribute to the global and European effort to end the TB epidemic. The project combines the diverse and rich contributions of our partners in order to exploit new technology and advances in knowledge to control TB"*

– Professor Abubakar, Scientific Coordinator for the project



## Our approach

### Outreach for early diagnosis and treatment

A mobile x ray unit equipped with computer aided detection software and molecular testing implemented in Romania and Bulgaria.

### Migrant TB detection, prevention and treatment

Screening new and settled asylum seekers and refugees in Italy for active and latent TB infection (LTBI), ensuring optimal care for TB/LTBI patients and generating evidence to support future European policies.

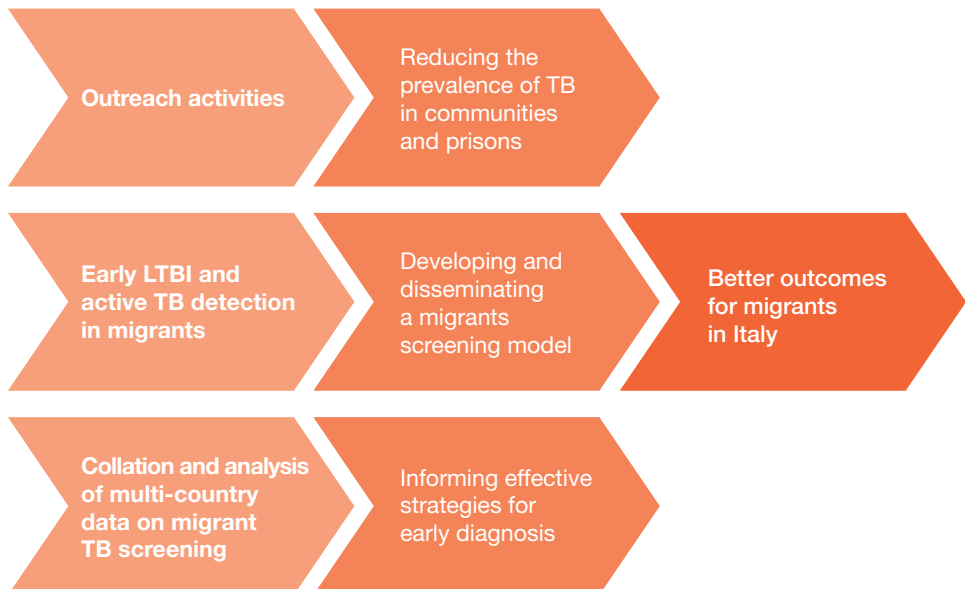
### Establishing a database of latent and active TB screening of migrants in Europe

Starting with data from Italy, Sweden, the Netherlands and UK and creating a unified data reporting system to enable epidemiological analysis and better tailor future TB control interventions.

### Supporting national TB programmes

Analysing best practice approaches from countries where national strategic plans have been most effective to create tools and comprehensive country-specific plans to reduce TB, which will assist other countries to develop their own frameworks for action.

## Our Objectives





# The E-DETECT TB consortium



University College London (London, United Kingdom)

Public Health England (London, United Kingdom)

Delft Imaging Systems (Veenendaal, The Netherlands)

Public Health Agency of Sweden (Stockholm, Sweden)

KNCV Tuberculosis Foundation (The Hague, The Netherlands)

Marius Nasta Institute of Pneumology (Bucharest, Romania)

Tsentar Za Zdravni Strategii i Programi (Sofia, Bulgaria)

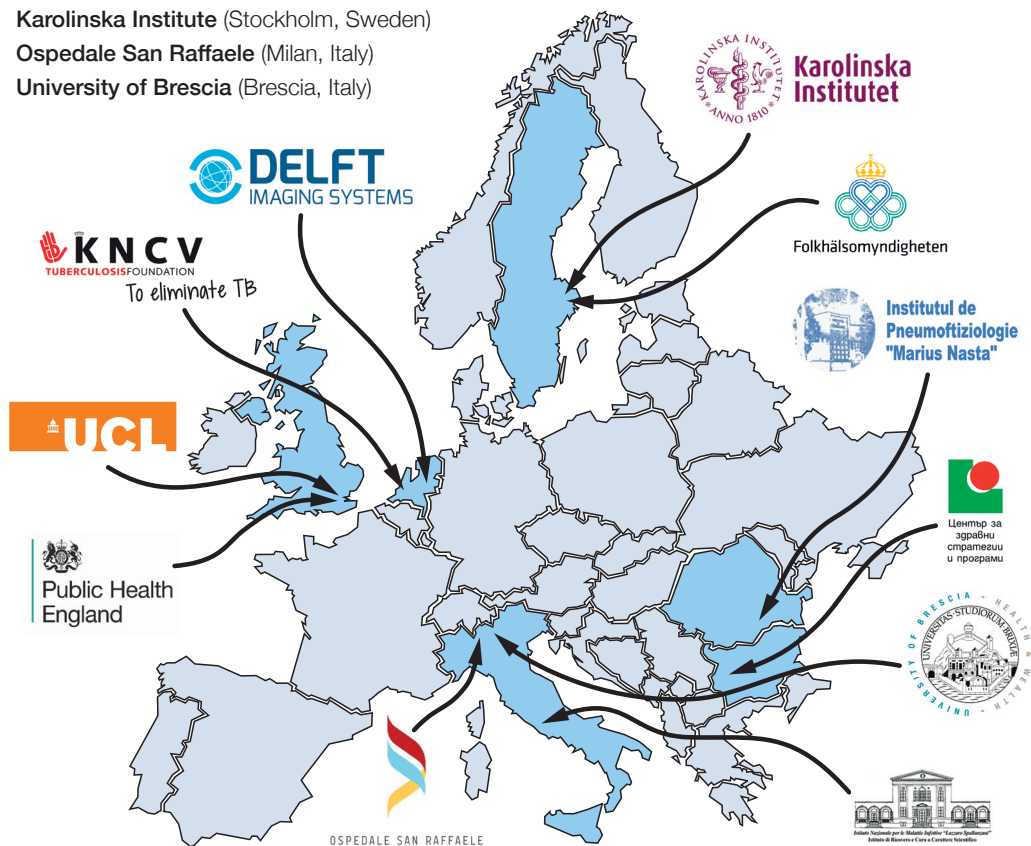
National Institute for Infectious Diseases (Rome, Italy)

Karolinska Institute (Stockholm, Sweden)

Ospedale San Raffaele (Milan, Italy)

University of Brescia (Brescia, Italy)

In collaboration with the 'Find & Treat' programme



More information: [contact@e-detecttb.eu](mailto:contact@e-detecttb.eu)  
Website: [www.e-detecttb.eu](http://www.e-detecttb.eu)



This project E-DETECT TB has received funding from the European Union's Health Programme (2014–2020) under Grant Agreement No.709624